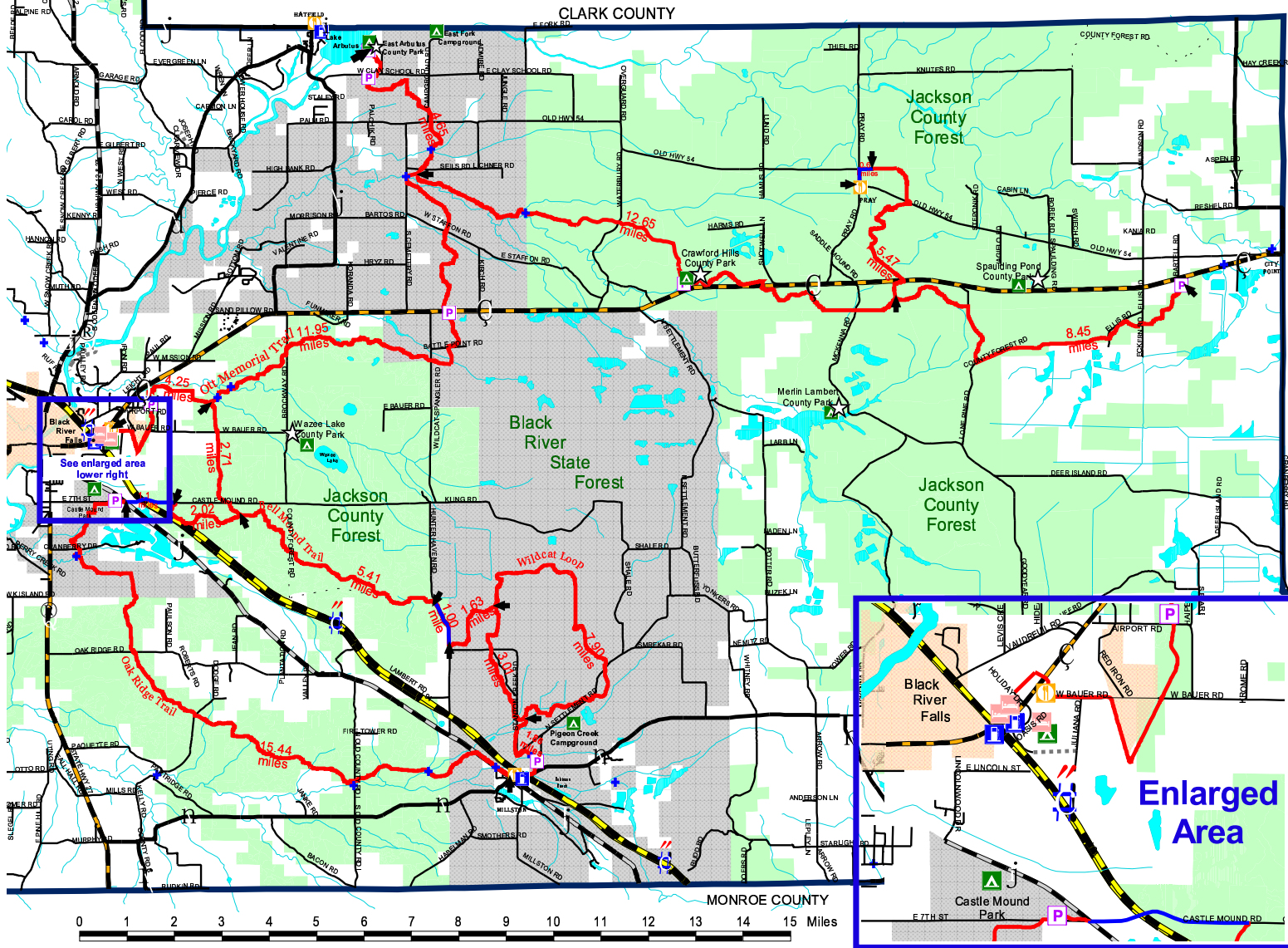


JACKSON COUNTY / BLACK RIVER STATE FOREST ATV / MOTORCYCLE TRAILS



- ATV/Motorcycle Trail
- Route on Town Road
- Mileage Figures are from arrow to arrow
- Total: Approximately 90 trail miles**
- Rivers and Streams
- State Forest Land
- County Forest Land
- Bridge
- Lodging
- Camping
- Fuel
- Food
- Trail Parking

For more information on Food and Lodging Contact the Black River Area Chamber of Commerce (800) 404-4008 www.blackrivercountry.com e-mail: chamber@cuttingedge.net

For more information on ATV/Motorcycle trails Contact the Jackson County Forestry and Parks Dept. (715) 284-8475 www.co.jackson.wi.us/html/forestry/forestry.html e-mail: jcfp@centurytel.net

ATVs AND MOTORCYCLES CANNOT ACCESS THE CITY OF BLACK RIVER FALLS