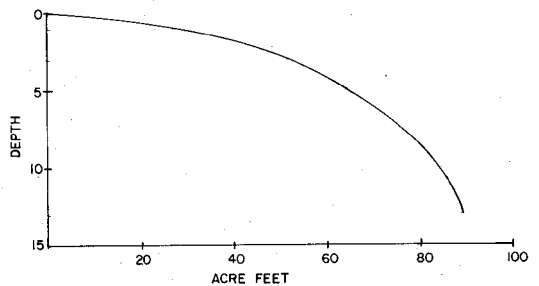
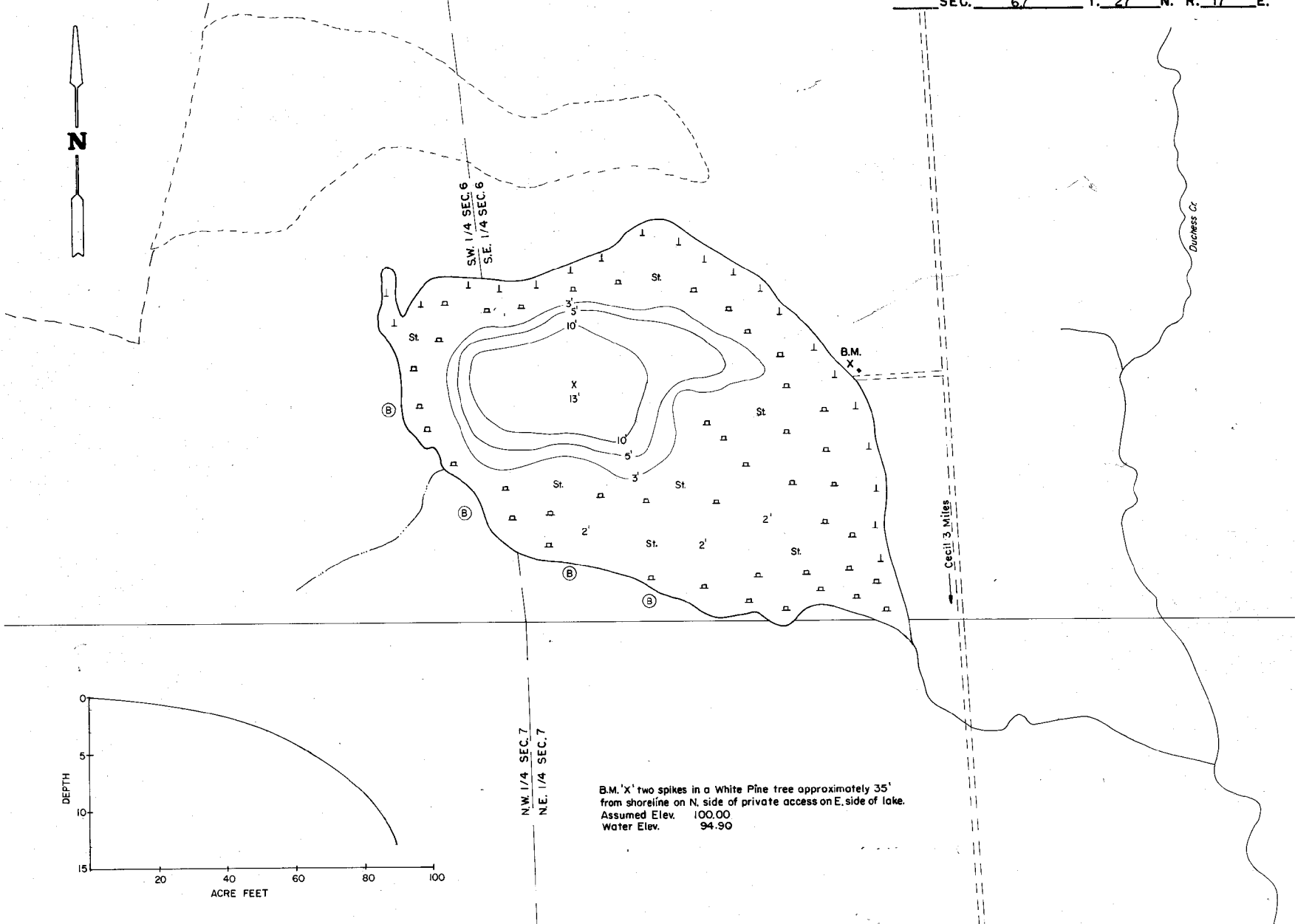


STATE OF WISCONSIN
DEPARTMENT OF NATURAL RESOURCES

LAKE SURVEY MAP

LILY LAKE SHAWANO COUNTY
SEC. 67 T. 27 N. R. 17 E.



B.M. 'X' two spikes in a White Pine tree approximately 35' from shoreline on N. side of private access on E. side of lake.
Assumed Elev. 100.00
Water Elev. 94.90

EQUIPMENT RECORDING SONAR MAPPED JULY 1972
MONTH BOTTOM YEAR

- | TOPOGRAPHIC SYMBOLS | | LAKE BOTTOM SYMBOLS | |
|-----------------------|----------------------------|---------------------|-----------------------------|
| (B) Brush | Steep slope | P. Peat | B Boulders |
| (PW) Partially wooded | ----- Indefinite shoreline | Mk. Muck | * Stumps & Snags |
| (W) Wooded | Marsh | C. Clay | ⚠ Rock danger to navigation |
| (C) Cleared | o Spring | M. Marl | T Submergent vegetation |
| (P) Pastured | ----- Intermittent stream | Sd. Sand | l Emergent vegetation |
| (A) Agricultural | ===== Permanent inlet | St. Silt | ⌋ Floating vegetation |
| B.M. Bench Mark | ===== Permanent outlet | Gr. Gravel | ⌋ Brush shelters |
| Dwellings | ▲ Dam | P. Rubble | |



Access Access with Parking Boat Livery

SPECIES OF FISH	1972		
	Abundant	Common	Present
Muskie			
N. Pike			X
Walleye			X
L.M. Bass			X
S.M. Bass			X
Panfish			X

WATER AREA 27.3 ACRES
UNDER 3 FT. 74 %
OVER 20 FT. 0 %
MAX. DEPTH 13 FEET.
TOTAL ALK. 48.0 P.P.M.
VOLUME 88.9 ACRE FT.
SHORELINE 91 MILES