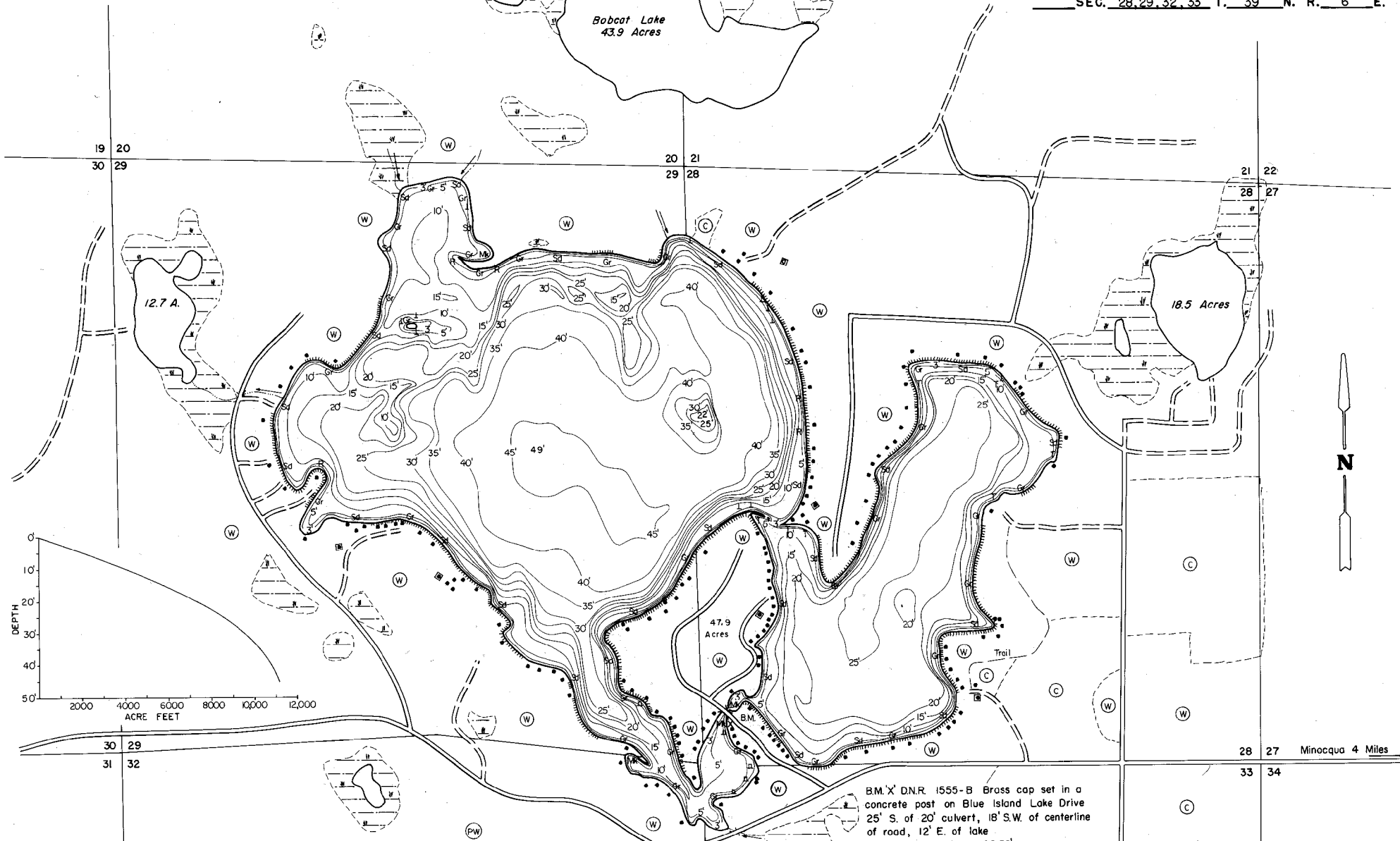


STATE OF WISCONSIN  
DEPARTMENT OF NATURAL RESOURCES

LAKE SURVEY MAP

BLUE LAKE ONEIDA COUNTY  
SEC. 28, 29, 32, 33 T. 39 N. R. 6 E.



B.M. X DNR. 1555-B Brass cap set in a concrete post on Blue Island Lake Drive 25' S. of 20' culvert, 18' S.W. of centerline of road, 12' E. of lake Assumed elevation 102.52' Water level 93.14'

EQUIPMENT RECORDING SONAR MAPPED AUG. 1972  
MONTH YEAR  
LAKE BOTTOM SYMBOLS

- |  |  |  |
|--|--|--|
| <p><b>TOPOGRAPHIC SYMBOLS</b></p> <ul style="list-style-type: none"> <li>(B) Brush</li> <li>(PW) Partially wooded</li> <li>(W) Wooded</li> <li>(C) Cleared</li> <li>(P) Pastured</li> <li>(A) Agricultural</li> <li>B.M. Bench Mark</li> <li>Dwelling</li> <li>Resort</li> <li>Camp</li> </ul> | <ul style="list-style-type: none"> <li>Steep slope</li> <li>Indefinite shoreline</li> <li>Marsh</li> <li>Spring</li> <li>Intermittent stream</li> <li>Permanent inlet</li> <li>Permanent outlet</li> <li>Dam</li> <li>D.N.R. State owned land</li> </ul> | <p><b>LAKE BOTTOM SYMBOLS</b></p> <ul style="list-style-type: none"> <li>P. Peat</li> <li>Mk. Muck</li> <li>C. Clay</li> <li>M. Marl</li> <li>Sd. Sand</li> <li>Sl. Silt</li> <li>Gr. Gravel</li> <li>R. Rubble</li> <li>Bc. Bedrock</li> <li>B. Boulders</li> <li>Stumps &amp; Snags</li> <li>Rock danger to navigation</li> <li>Submergent vegetation</li> <li>Emergent vegetation</li> <li>Floating vegetation</li> <li>Brush shelters</li> </ul> |
|--|--|--|



Access Access with Parking Boat Livery  
 Drawn by: C.Holt  
 Field work by: J.Smith, W.Evans

SPECIES OF FISH	ABUNDANT		
	Abundant	Common	Present
Muskie			
N. Pike			
Walleye	X		
L.M. Bass	X		
S.M. Bass	X		
Panfish	X		
Trout			

WATER AREA 456.4 ACRES  
 UNDER 3 FT. 4 %  
 OVER 20 FT. 63 %  
 MAX. DEPTH 49 FEET.  
 TOTAL ALK. 25 P.P.M.  
 VOLUME 11,160 ACRE FT.  
 MAIN SHORELINE 5.64 MI.  
 ISLAND SHORELINE 1.50 MI.