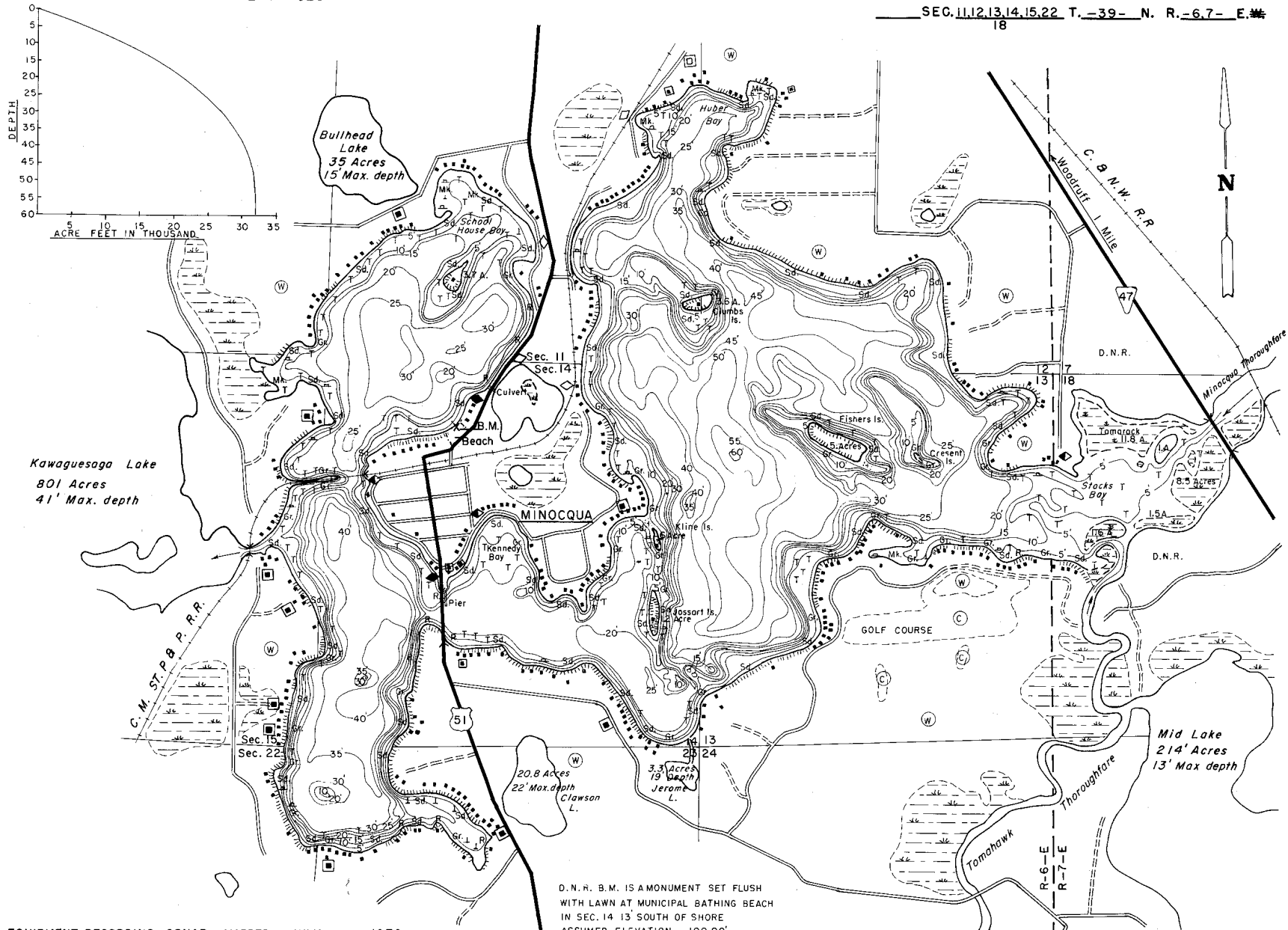


STATE OF WISCONSIN  
DEPARTMENT OF NATURAL RESOURCES

LAKE SURVEY MAP

MINOCQUA LAKE ONEIDA COUNTY  
SEC. 11, 12, 13, 14, 15, 22 T. -39- N. R. -6, 7- E. 18



EQUIPMENT RECORDING SONAR MAPPED JULY 1972

- | TOPOGRAPHIC SYMBOLS   |                           | LAKE BOTTOM SYMBOLS |                             |
|-----------------------|---------------------------|---------------------|-----------------------------|
| (B) Brush             | Steep slope               | P. Peat             | B Boulders                  |
| (PW) Partially wooded | ~ Indefinite shoreline    | Mk. Muck            | ⊙ Stumps & Snags            |
| (W) Wooded            | ~ Marsh                   | C. Clay             | ⊛ Rock danger to navigation |
| (C) Cleared           | ~ Spring                  | M. Marl             | T Submergent vegetation     |
| (P) Postured          | ~ Intermittent stream     | Sd. Sand            | 1 Emergent vegetation       |
| (A) Agricultural      | ~ Permanent inlet         | Sl. Silt            | ~ Floating vegetation       |
| B.M. Bench Mark       | ~ Permanent outlet        | Gr. Gravel          | ⊕ Brush shelters            |
| ■ Dwelling            | ~ Dam                     | R. Rubble           |                             |
| □ Resort              | ~ D.N.R. State owned land | Bc. Bedrock         |                             |

D.N.R. B.M. IS A MONUMENT SET FLUSH WITH LAWN AT MUNICIPAL BATHING BEACH IN SEC. 14 13 SOUTH OF SHORE ASSUMED ELEVATION 100.00' WATER ELEVATION 95.80 Taken 5/25/73



◆ Access    ◀ Access with Parking    ◆ Boat Livery

Drawn by E. Eaton  
Field work by J. Smith

SPECIES OF FISH	ABUNDANCE		
	Abundant	Common	Present
Muskie			X
N. Pike	X		
Walleye	X		
L.M. Bass	X		
S.M. Bass	X		
Panfish	X		
Trout			

WATER AREA 1,360 ACRES  
UNDER 3 FT. 6 %  
OVER 20 FT. 55 %  
MAX. DEPTH 60 FEET  
TOTAL ALK. 35 P.P.M.  
VOLUME 31,765 ACRE FT.  
SHORELINE 15.68 MILES  
WITH ISLANDS 19.08 MILES