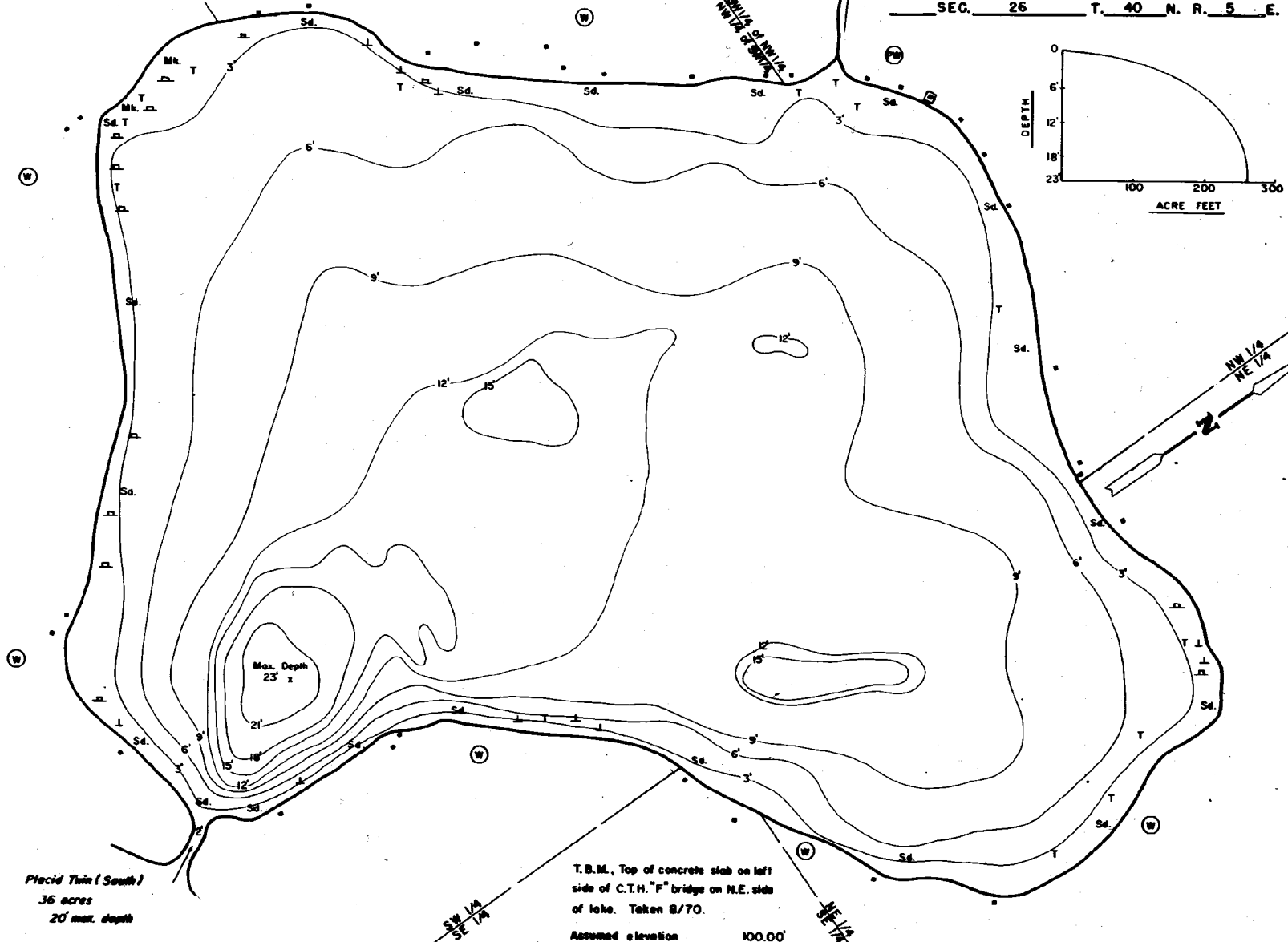


STATE OF WISCONSIN
DEPARTMENT OF NATURAL RESOURCES

LAKE SURVEY MAP

PLACID TWIN (NORTH)
LAKE
SEC. 26 T. 40 N. R. 5 E.
VILAS COUNTY



Placid Twin (South)
36 acres
20' max. depth

T.B.M., Top of concrete slab on left side of C.T.H. "F" bridge on N.E. side of lake. Taken 8/70.
Assumed elevation 100.00'
Water elevation 92.50'

- | | | | | |
|----------------------------|-----------------------------|--------------------|--------------|-------------|
| EQUIPMENT RECORDING | SONAR | MAPPED | AUG | 1970 |
| TOPOGRAPHIC SYMBOLS | | | MONTH | YEAR |
| (1) Brush | (1) Steep slope | (1) P. Post | | |
| (2) Partly wooded | (2) Indefinite shoreline | (M) Muck | | |
| (3) Shaded | (3) Marsh | (S) Stumps & Snags | | |
| (4) Cleared | (4) Spring | (C) Clay | | |
| (5) Pastured | (5) Intermittent stream | (M) Marl | | |
| (6) Agricultural | (6) Permanent inlet | (Sd) Sand | | |
| (7) B.M. Bench Mark | (7) Permanent outlet | (Sl) Silt | | |
| (8) Dwelling | (8) Dam | (Gr) Gravel | | |
| (9) Resort | (9) B.N.R. State owned land | (R) Rubble | | |
| (10) Camp | | (Bc) Bedrock | | |

- | | | | | | |
|--------------|--------------------|-------------------------------|-------------------------|-------------------------|---------------------|
| (B) Boulders | (S) Stumps & Snags | (R) Rock danger to navigation | (V) Emergent vegetation | (F) Floating vegetation | (BS) Brush shelters |
|--------------|--------------------|-------------------------------|-------------------------|-------------------------|---------------------|



Access Access with Parking Boat Livery
Drawn by: T. Gindor
Field work by: J. Smith & R. Crocker

SPECIES OF FISH		ABUNDANT	COMMON	PRESENT
Bluegill				
W. Pike				
Walleye				
W. Bass				
S. M. Bass				
Perch				
Trout				

WATER AREA 32.47 ACRES
UNDER 3 FT. 12 %
OVER 30 FT. 2 %
MAX. DEPTH 23 FEET
TOTAL ALK. 17 P.P.M.
VOLUME 228.91 ACRE FT.
SHORELINE .28 MILES