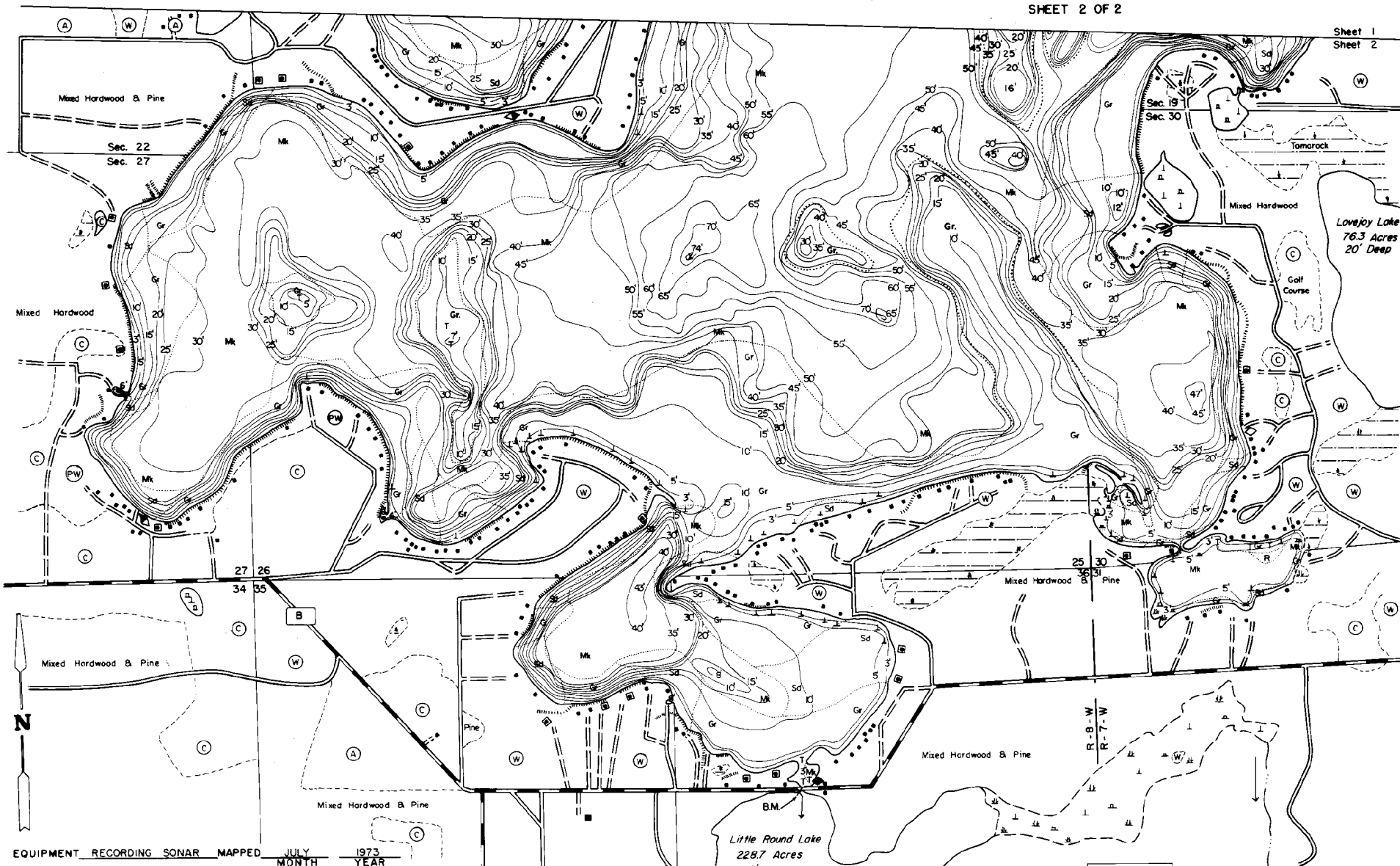


STATE OF WISCONSIN  
DEPARTMENT OF NATURAL RESOURCES

LAKE SURVEY MAP

ROUND LAKE      SAWYER COUNTY  
SEC. AS SHOWN T. 41 N. R. 8 W.  
SHEET 2 OF 2



EQUIPMENT RECORDING SONAR MAPPED JULY 1973

- | TOPOGRAPHIC SYMBOLS |                  | LAKE BOTTOM SYMBOLS |                           |                         |
|---------------------|------------------|---------------------|---------------------------|-------------------------|
| B                   | Brush            | P                   | Peat                      |                         |
| PW                  | Partially wooded | Mk                  | Muck                      |                         |
| W                   | Wooded           | o                   | Boulders                  |                         |
| C                   | Cleared          | o                   | Stumps & Snags            |                         |
| P                   | Pastured         | o                   | Rock danger to navigation |                         |
| A                   | Agricultural     | T                   | Submergent vegetation     |                         |
| B.M.                | Bench Mark       | L                   | Emergent vegetation       |                         |
| ■                   | Dwelling         | △                   | Floating vegetation       |                         |
| □                   | Resort           | ◆                   | Brush shelters            |                         |
| □                   | Camp             | Sd                  | Sand                      |                         |
|                     |                  | Sl                  | Silt                      |                         |
|                     |                  | Gr                  | Gravel                    |                         |
|                     |                  | R                   | Rubble                    |                         |
|                     |                  | Br                  | Bedrock                   |                         |
|                     |                  |                     | —                         | Intermittent stream     |
|                     |                  |                     | —                         | Permanent inlet         |
|                     |                  |                     | —                         | Permanent outlet        |
|                     |                  |                     | —                         | Dam                     |
|                     |                  |                     | —                         | D.N.R. State owned land |
|                     |                  |                     | —                         | Steep slope             |
|                     |                  |                     | —                         | Indefinite shoreline    |
|                     |                  |                     | —                         | Marsh                   |
|                     |                  |                     | —                         | Spring                  |

B.M. X-DNR 1127-D Square cut  
in the S curb of C.T.H. 'B'  
Assumed elevation 83.69'  
Water level 77.65'

800' 0' 800' 1600' 2400' 3200'

SCALE

◊ Access      ◊ Access with Parking      ◊ Boat Livery

Drawn by: C. Hall  
Field work by: C. Busch, K. Cable, L. Sather

SPECIES OF FISH

Species	Abundant	Common	Present
Muskie	X		
N. Pike	X	X	
Walleye	X	X	
L. M. Bass	X	X	
S. M. Bass	X	X	
Panfish	X		
Trout			
Cisco	X		

WATER AREA 3054.0 ACRES  
UNDER 3 FT. 10 %  
OVER 20 FT. 70 %  
MAX. DEPTH 74 FEET.  
TOTAL ALK. 41 P.P.M.  
VOLUME 97,495 ACRE FT.  
MAIN SHORELINE 19.88 MI.  
ISLAND SHORELINE 0.35 MI.