

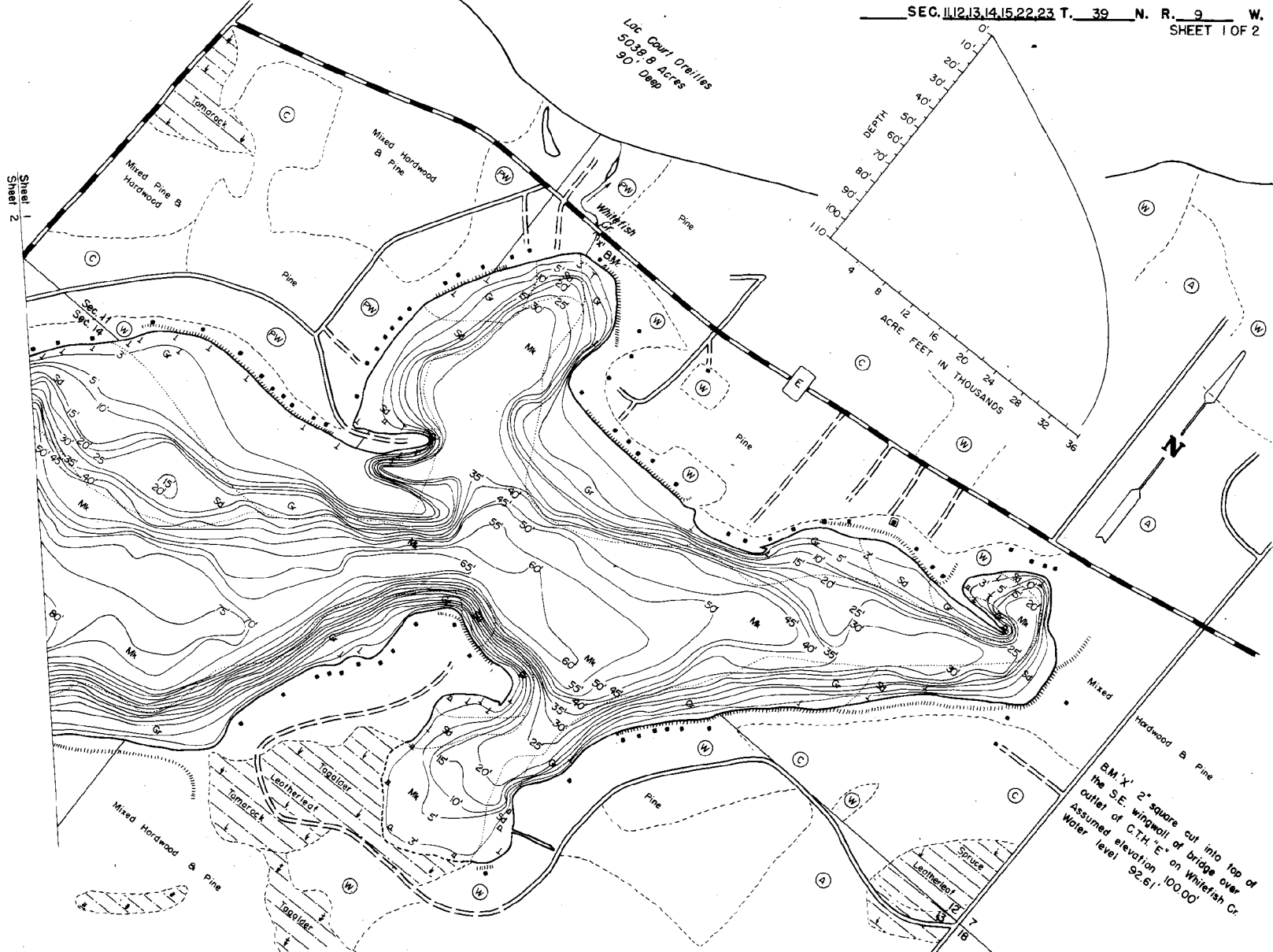
STATE OF WISCONSIN  
DEPARTMENT OF NATURAL RESOURCES

LAKE SURVEY MAP

WHITEFISH  
LAKE

SAWYER  
COUNTY

SEC. 11, 12, 13, 14, 15, 22, 23 T. 39 N. R. 9 W.  
SHEET 1 OF 2



EQUIPMENT RECORDING SONAR MAPPED SEPT 1971  
MONTH LAKE BOTTOM YEAR

- |  |  |   |
|--|--|---|
| <ul style="list-style-type: none"> <li>(B) Brush</li> <li>(PW) Partially wooded</li> <li>(W) Wooded</li> <li>(C) Cleared</li> <li>(P) Pastured</li> <li>(A) Agricultural</li> <li>B.M. Bench Mark</li> <li>Dwelling</li> <li>Resort</li> </ul> | <ul style="list-style-type: none"> <li>      Steep slope</li> <li>- - - Indefinite shoreline</li> <li>~ Marsh</li> <li>~ Spring</li> <li>- - - Intermittent stream</li> <li>— Permanent inlet</li> <li>— Permanent outlet</li> <li>— Dam</li> <li>— D.N.R. State owned land</li> </ul> | <ul style="list-style-type: none"> <li>P. Peat</li> <li>Mk. Muck</li> <li>C. Clay</li> <li>M. Marl</li> <li>Sd. Sand</li> <li>St. Silt</li> <li>Gr. Gravel</li> <li>R. Rubble</li> <li>Rc. Redrock</li> <li>B Boulders</li> <li>⊕ Stumps &amp; Snags</li> <li>⊕ Rock danger to navigation</li> <li>⊕ Submergent vegetation</li> <li>⊕ Emergent vegetation</li> <li>⊕ Floating vegetation</li> <li>⊕ Brush shelters</li> </ul> |
|--|--|---|



Access Access with Parking Boat Livery  
Drawn by: C. Holt

SPECIES OF FISH	ABUNDANCE		
	Abundant	Common	Present
Muskie		X	
N. Pike		X	
Walleye	X		
L. M. Bass	X	X	
S. M. Bass		X	
Panfish	X	X	
Trout			X

WATER AREA 785.7 ACRES  
UNDER 3 FT. 6 %  
OVER 20 FT. 70 %  
MAX. DEPTH 105 FEET.  
TOTAL ALK. 37 P.P.M.  
VOLUME 35,502 ACRE FT.  
SHORELINE 8.07 MILES