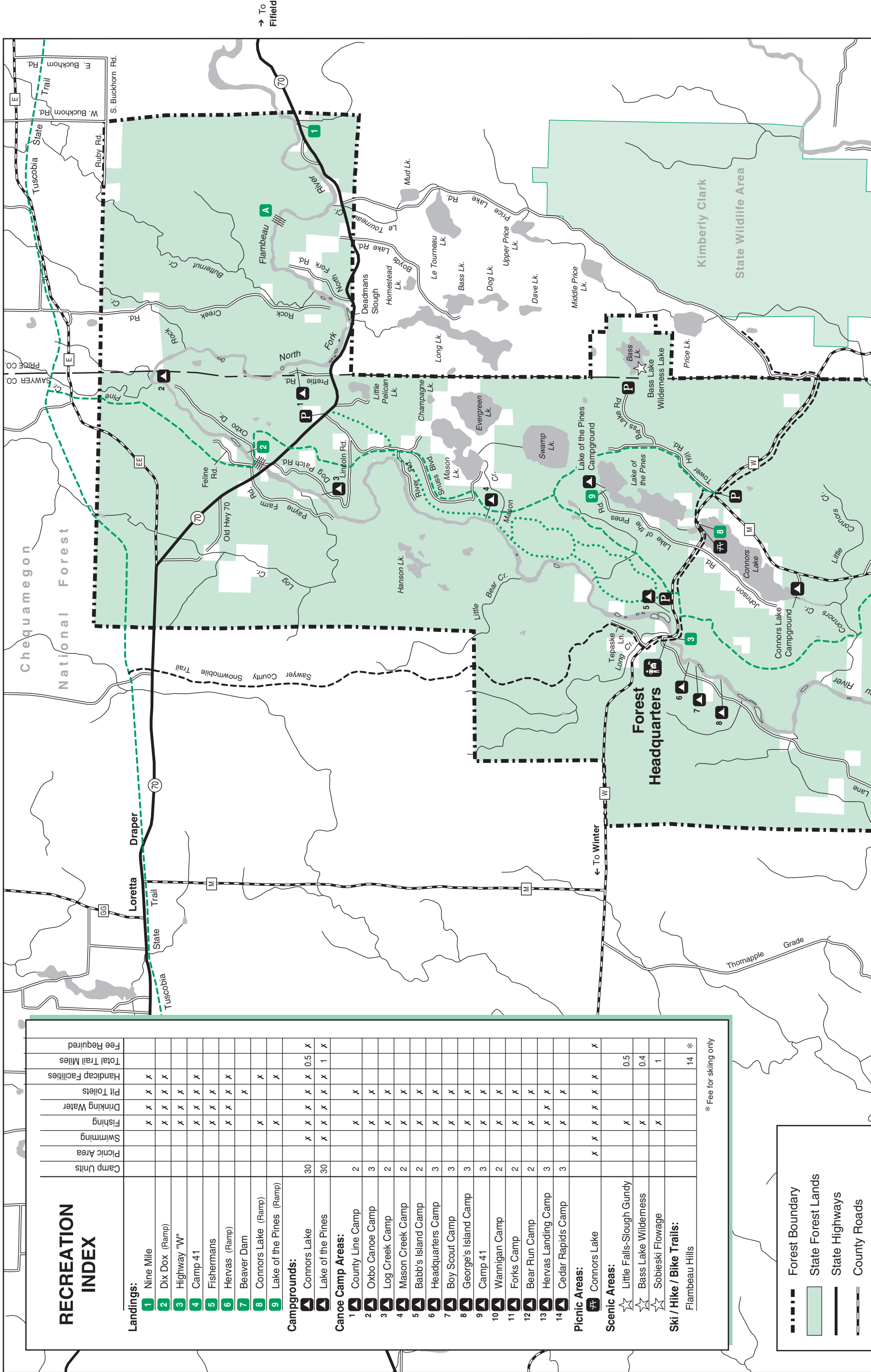


# Flambeau River State Forest

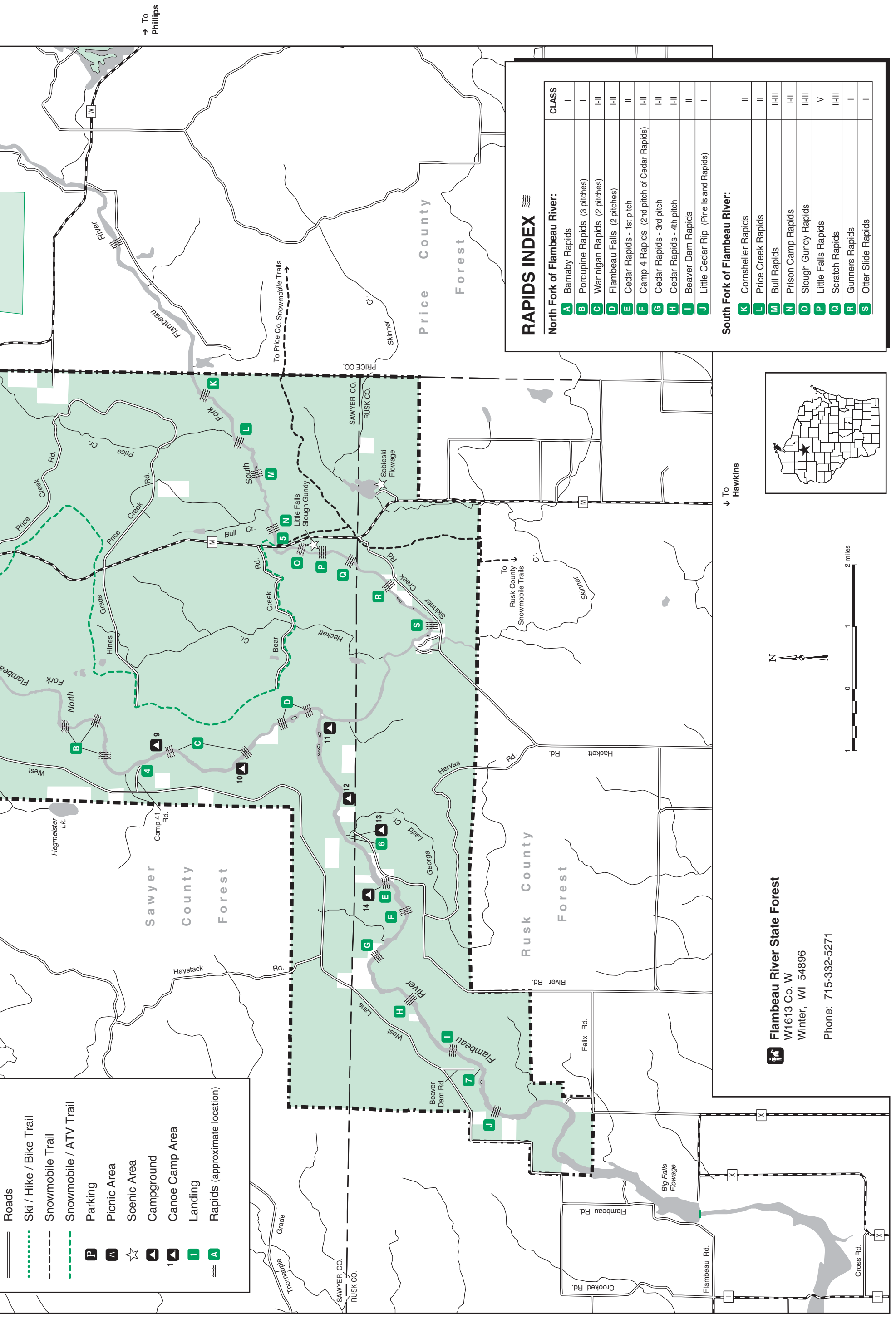
Wisconsin Department of Natural Resources



RECREATION INDEX	Camp Units	Picnic Area	Swimming	Fishing	Drinking Water	Pit Toilets	Handicap Facilities	Total Trail Miles	Fee Required
<b>Landings:</b>									
1 Nine Mile			X	X	X	X	X		
2 Dix Dox (Ramp)			X	X	X	X	X		
3 Highway "W"			X	X	X	X	X		
4 Camp 41			X	X	X	X	X		
5 Fishermans			X	X	X	X	X		
6 Hervas (Ramp)			X	X	X	X	X		
7 Beaver Dam						X			
8 Connors Lake (Ramp)			X	X			X		
9 Lake of the Pines (Ramp)			X	X			X		
<b>Campgrounds:</b>									
Connors Lake	30		X	X	X	X	X	0.5	X
Lake of the Pines	30		X	X	X	X	X	1	X
<b>Canoe Camp Areas:</b>									
1 County Line Camp	2		X	X					
2 Oxbo Canoe Camp	3		X	X					
3 Log Creek Camp	2		X	X					
4 Mason Creek Camp	2		X	X					
5 Babb's Island Camp	2		X	X					
6 Headquarters Camp	3		X	X					
7 Boy Scout Camp	3		X	X					
8 George's Island Camp	3		X	X					
9 Camp 41	3		X	X					
10 Wannigan Camp	2		X	X					
11 Forks Camp	2		X	X					
12 Bear Run Camp	2		X	X					
13 Hervas Landing Camp	3		X	X					
14 Cedar Rapids Camp	3		X	X					
<b>Picnic Areas:</b>									
Connors Lake		X	X	X	X	X			X
<b>Scenic Areas:</b>									
Little Falls-Slough Gundy			X					0.5	
Bass Lake Wilderness			X					0.4	
Sobieski Flowage			X					1	
<b>Ski / Hike / Bike Trails:</b>									
Flambeau Hills								14	*

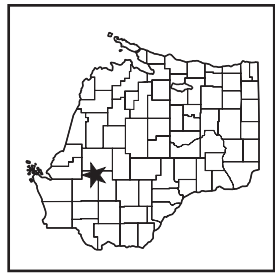
\* Fee for skiing only

- Forest Boundary
- State Forest Lands
- State Highways
- County Roads



### RAPIDS INDEX

CLASS	Location
I	<b>A</b> Bamaby Rapids
I	<b>B</b> Porcupine Rapids (3 pitches)
I-II	<b>C</b> Wannigan Rapids (2 pitches)
I-II	<b>D</b> Flambeau Falls (2 pitches)
II	<b>E</b> Cedar Rapids - 1st pitch
I-II	<b>F</b> Camp 4 Rapids (2nd pitch of Cedar Rapids)
I-II	<b>G</b> Cedar Rapids - 3rd pitch
I-II	<b>H</b> Cedar Rapids - 4th pitch
II	<b>I</b> Beaver Dam Rapids
I	<b>J</b> Little Cedar Rip (Pine Island Rapids)
<b>South Fork of Flambeau River:</b>	
II	<b>K</b> Cornsheller Rapids
II	<b>L</b> Price Creek Rapids
II-III	<b>M</b> Bull Rapids
I-II	<b>N</b> Prison Camp Rapids
II-III	<b>O</b> Slough Gundy Rapids
V	<b>P</b> Little Falls Rapids
II-III	<b>Q</b> Scratch Rapids
I	<b>R</b> Gunners Rapids
I	<b>S</b> Otter Slide Rapids



**Flambeau River State Forest**  
 W1613 Co. W  
 Winter, WI 54896  
 Phone: 715-332-5271

→ To Phillips

↓ To Hawkins

↓ To Hwy 8