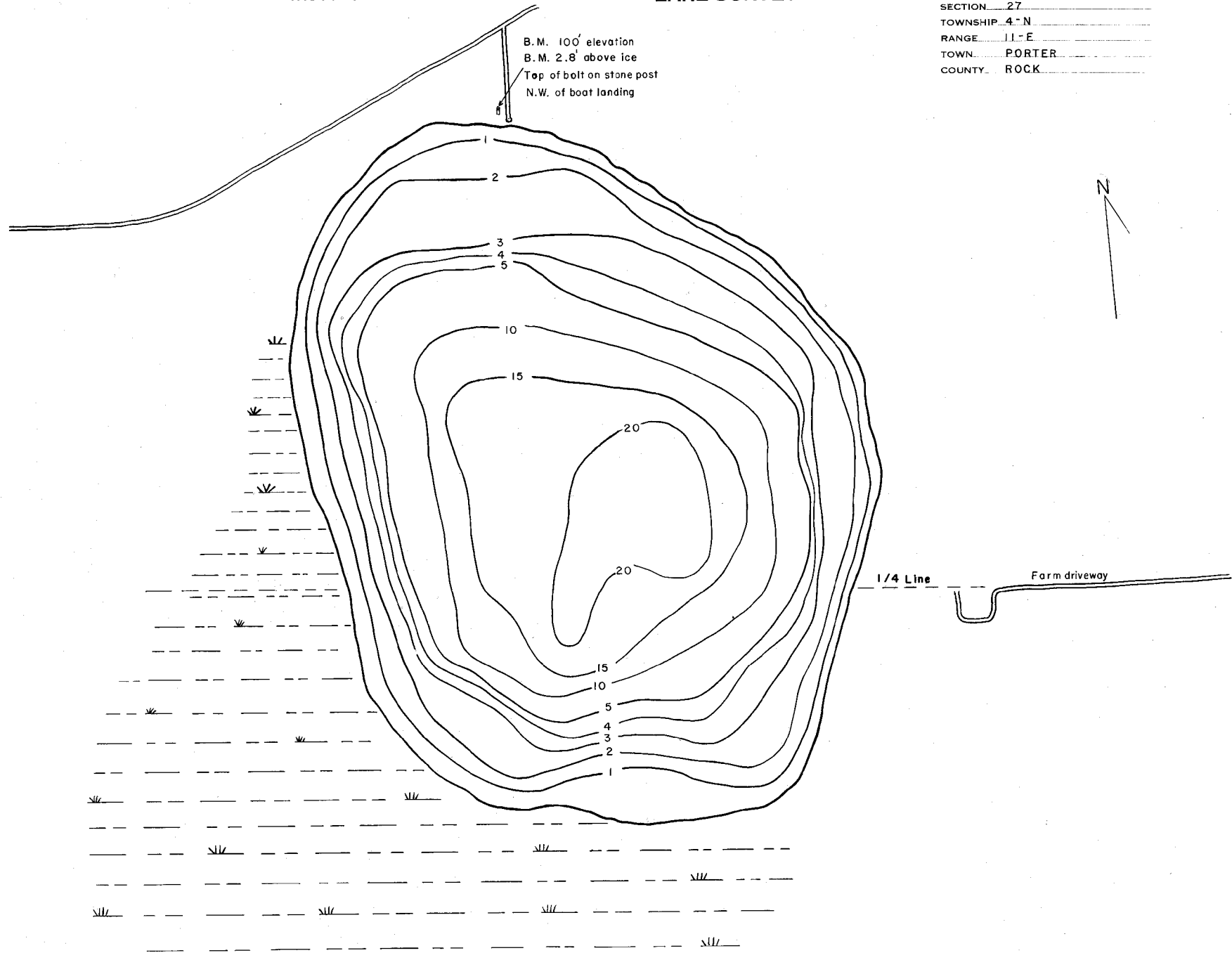


WISCONSIN CONSERVATION DEPARTMENT

LAKE SURVEY MAP

LAKE . . . GIBBS
SECTION . . . 27
TOWNSHIP . . . 4 - N
RANGE . . . 11 - E
TOWN . . . PORTER
COUNTY . . . ROCK

B.M. 100' elevation
B.M. 2.8' above ice
Top of bolt on stone post
N.W. of boat landing



DATE 1-7-54
SOURCE OF INFORMATION
W.C.D. lakes survey grids on ice

AREA 64.85 acres
TOTAL SHORELINE 1.15 miles
MAX. DEPTH 23 ft.