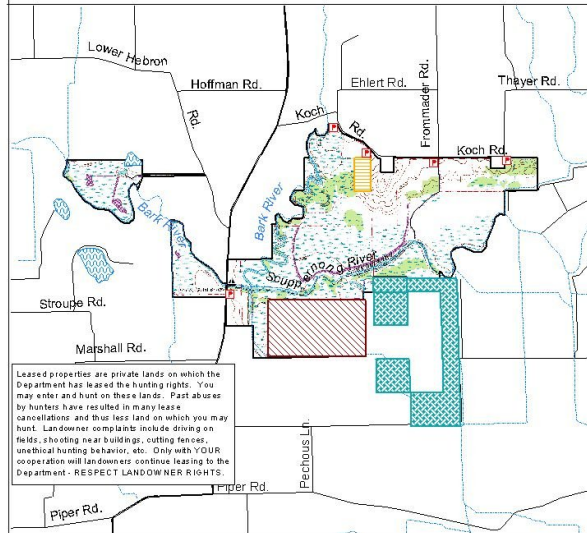




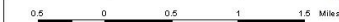
# Prince's Point Wildlife Area

Jefferson County

2001



Leased properties are private lands on which the Department has leased the hunting rights. You may enter and hunt on these lands. Past abuses by hunters have resulted in many lease cancellations and thus less land on which you may hunt. Landowner complaints include driving on fields, shooting near buildings, cutting fences, unethical hunting behavior, etc. Only with YOUR cooperation will landowners continue leasing to the Department - RESPECT LANDOWNER RIGHTS.



- Waterfowl Refuge: No hunting during waterfowl season except deer in open gun season
- Hunting Easement
- Leased Land
- Local Roads
- Streams
- Parking Lot
- Boat Launch
- State-owned

DIRECT QUESTIONS TO:  
Wildlife Biologist  
DNR  
1213 S. Main Street  
Lake Mills, WI 53551  
(608) 648-3054

Designated use areas operated and maintained in accordance with S. 23.115, WIS. STATS.:

