

WISCONSIN CONSERVATION DEPARTMENT

LAKE SURVEY MAP

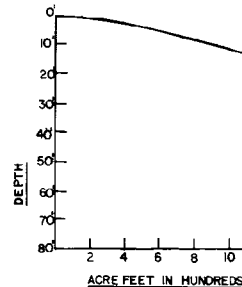
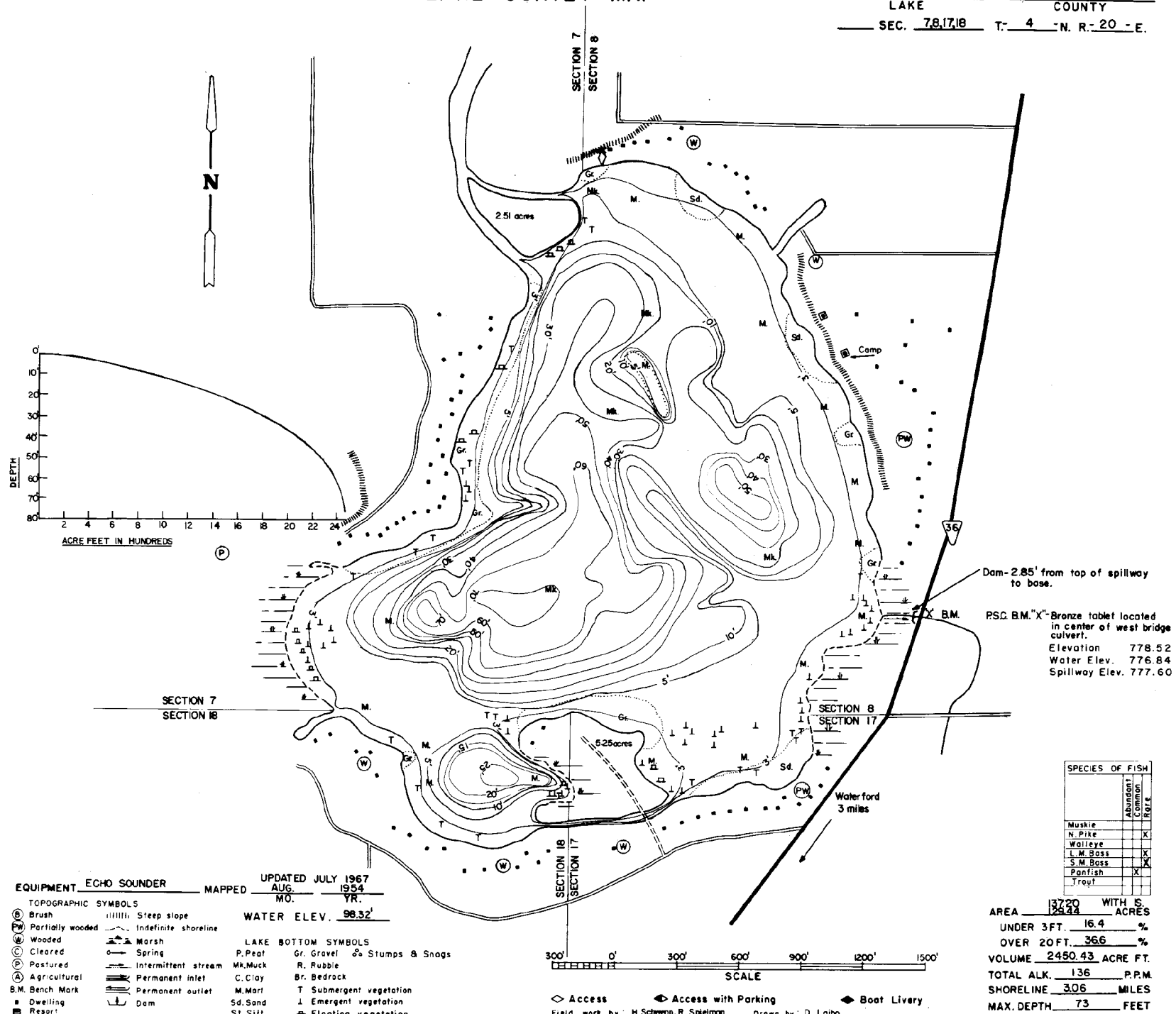
WAUBESEE
LAKE

RACINE
COUNTY

SEC. 7, 8, 17, 18

T. 4

N. R. 20 - E.



Dam-2.85' from top of spillway to base.
P.S.C. B.M. 'X'-Bronze tablet located in center of west bridge culvert.
Elevation 778.52
Water Elev. 776.84
Spillway Elev. 777.60

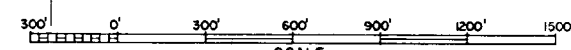
SPECIES OF FISH	
	Abundant Common Rare
Muskie	
N. Pike	X
Walleye	
L. M. Bass	X
S. M. Bass	X
Panfish	X
Frogt	

EQUIPMENT ECHO SOUNDER MAPPED AUG. 1954
 TOPOGRAPHIC SYMBOLS
 (B) Brush (|||||) Steep slope
 (PW) Partly wooded (---) Indefinite shoreline
 (W) Wooded (---) Marsh
 (C) Cleared (---) Spring
 (P) Pastured (---) Intermittent stream
 (A) Agricultural (---) Permanent inlet
 B.M. Bench Mark (---) Permanent outlet
 (■) Dwelling (---) Dam
 (■) Resort (---) Dam

LAKE BOTTOM SYMBOLS
 P. Peat Gr. Gravel Stumps & Snags
 MK. Muck R. Rubble
 C. Clay Br. Bedrock
 M. Marl T. Submergent vegetation
 Sd. Sand E. Emergent vegetation
 Sl. Silt F. Floating vegetation

WATER ELEV. 98.32'

UPDATED JULY 1967
 AUG. 1954
 MO. YR.



AREA 13720 WITH S. 2534 ACRES
 UNDER 3 FT. 16.4 %
 OVER 20 FT. 366 %
 VOLUME 2450.43 ACRE FT.
 TOTAL ALK. 136 P.P.M.
 SHORELINE 306 MILES
 MAX. DEPTH 73 FEET

◇ Access ◊ Access with Parking ◆ Boat Livery
 Field work by: H. Schwenh, R. Spielman Drawn by: D. Laiba